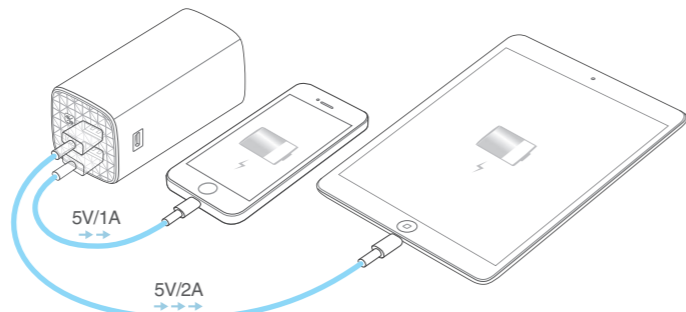


## 1 How do I use the TL-PB10400 to charge other devices?

Just connect your device as shown below to charge.



Note:  
The 5V/2A USB port can automatically adjust its voltage to charge your 5V/1A devices.

Press the power button to check the current battery capacity, the LED lights will turn off automatically after 5 seconds.



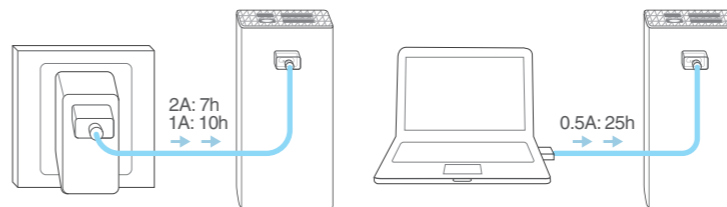
- ◆ 1 lights on
- ◆ 1 light blinking
- ◇ off

LED Display	Battery Capacity
◆◆◆◆	75%~100%
◆◆◆◇	50%~75%
◆◆◆◇	25%~50%
◆◆◆◇	10%~25%
◆◆◆◇	0%~10%
◆◆◆◇	0

## 2 How do I charge the TL-PB10400?

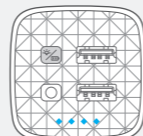
1 Via the Power Adapter

2 Via Computer USB Port



Note:

- The TL-PB10400 is compatible with 5VDC adapters. For more efficiency, we suggest using a 5V/2A power adapter to charge the TL-PB10400.
- The TL-PB10400 cannot charge other devices while it is charging.

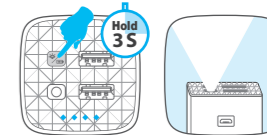


- ◆ 1 lights on
- ◆ 1 light blinking
- ◇ off

LED Display	Battery Capacity
◆◆◆◇	0%~25%
◆◆◆◇	25%~50%
◆◆◆◇	50%~75%
◆◆◆◇	75%~100%
◆◆◆◇	100%

## Flashlight

Hold the power button for 3 seconds to turn on/off the flashlight.



## Attention

- Keep this device away from water, fire, humidity or hot environments.
- Do not heavily drop or impact this device.
- Do not attempt to extrude or pierce this device, which may cause it to short-circuit.
- Do not attempt to disassemble, modify or fix this device by yourself.
- Do not use a damaged power charger or USB cable to charge this device.
- If the product is found to have be bulging or shows other undesirable phenomena, stop using the product immediately and contact us or your dealer
- Please recycle this device at an appointed disposal location.
- This product is not suitable for those lacking relevant knowledge and experience, please use under the supervision and guidance of professionals.
- Please charge this device once every three months to avoid shortening its battery life.
- Please use the recommended power adapter to charge this device.

• Contact Us  
If you have any questions related to this product, please contact our technical support:  
<http://www.tp-link.com/en/support/contact/>

• For more information, please refer to:  
[www.tp-link.com](http://www.tp-link.com)

